

The logo for the European Banking Authority (EBA) is located in the top left corner. It consists of the letters 'EBA' in a bold, white, sans-serif font. To the right of the letters, the words 'EUROPEAN BANKING AUTHORITY' are stacked vertically in a smaller, white, sans-serif font. The logo is set against a dark blue background with a subtle pattern of white lines.

EBA

EUROPEAN
BANKING
AUTHORITY

Technology and Innovation - EBA Keynote

Eurofiling | Frankfurt | 13 June 2023

EU Strategy for Supervisory Data

Commission communication Dec 2021

- Deliver accurate, unambiguous, and timely data to supervisory authorities
- Enable effective and efficient monitoring and supervision of the financial system
- Minimise the reporting costs and burden for the supervised entities and supervisors

Common definitions

Zero duplications

Stability

Data Sharing

IT-readiness

EBA work to improve reporting and facilitate access to information

2021 - 2023

- CoC study recommendations for the efficiency and cost reduction on reporting
- DPM Refit project together with EIOPA to evolve DPM to DPM standard 2.0 and tools for management

2021-2026

- EBA data strategy

2025

- Pillar 3 data hub

Joint work - alignment of projects with other authorities

European and national authorities

- Integrated reporting for the banking sector

Pillar 3 Data Hub

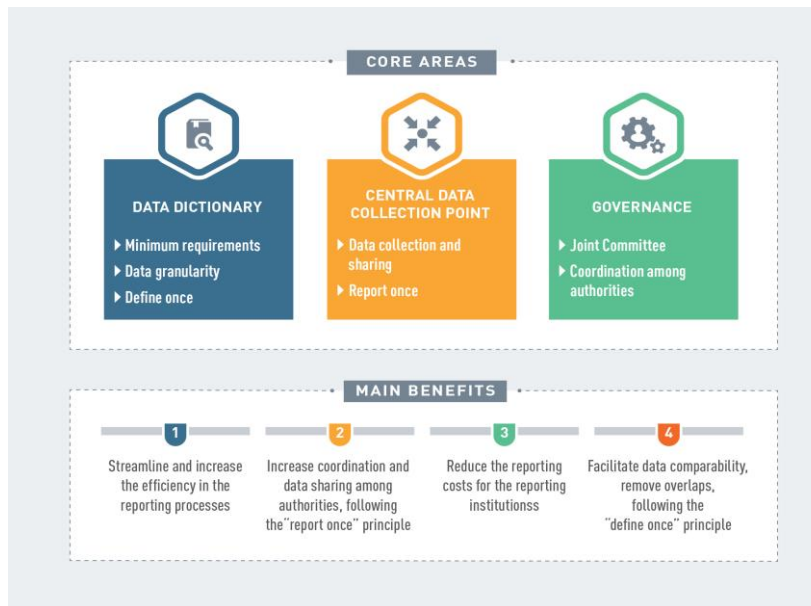
ESAP

DORA reporting hub

Integrated reporting

Common data dictionary - methodology (DPM ReFit)

OBJECTIVE: Increase the efficiency of the reporting process and reduce costs for all reporting ecosystem



EBA FS discussion paper: use of technology by institutions -> different situations and levels of technology maturities, but an increased awareness of the importance of data standardisation as a way to improve data availability and to streamline the processes of regulatory compliance

EBA Evolutions

Definition

DPM Refit

DPM Studio

DPM Quality Review

Collection

XBRL-CSV

Pillar3 Data Hub

Processing

CVE

EDAP

Collaborative Analytics

Please join our Meet-the-Market sessions to find out more!

Technology – Direction, Challenges and Opportunities

Change is shifting gears: what should we note from SVB, ChatGPT? Speed of change.

Cloud is the new norm, a precondition for new tech. A new story of risk.

A mix (always different) of efficiency, evolution, innovation, risk. What is your right mix?

THANK YOU!

The logo for the European Banking Authority (EBA) is located in the top left corner. It features the letters 'EBA' in a large, white, sans-serif font. To the right of the letters, the words 'EUROPEAN BANKING AUTHORITY' are written in a smaller, white, sans-serif font, stacked vertically. The logo is set against a dark blue background with a subtle grid pattern.

EBA

EUROPEAN
BANKING
AUTHORITY

EUROPEAN BANKING AUTHORITY

Floor 24-27, Tour Europlaza
20 Avenue André Prothin
92400 Courbevoie, France

Tel: +33 1 86 52 70 00

E-mail: info@eba.europa.eu

<https://eba.europa.eu/>

Using technology and innovation for building a common European Pillar 3 Data Hub improving access to information and use of data

