

# Project Gaia

Enabling Climate Risks Analysis



# Outline

- Introduction
- Project Gaia
  - Vision
  - Outreach strategy
  - Technical considerations
  - Outlook
  - Demo
- Q&A

# Need for **climate related data**

Dealing with climate change means managing **climate-related risk**:

- **Physical**
- **Transitional**

**Reliable Data** is needed to assess the impact of climate change **in the financial system**



# Challenges for climate data



Lack of  
Standards



Traceability  
to Source

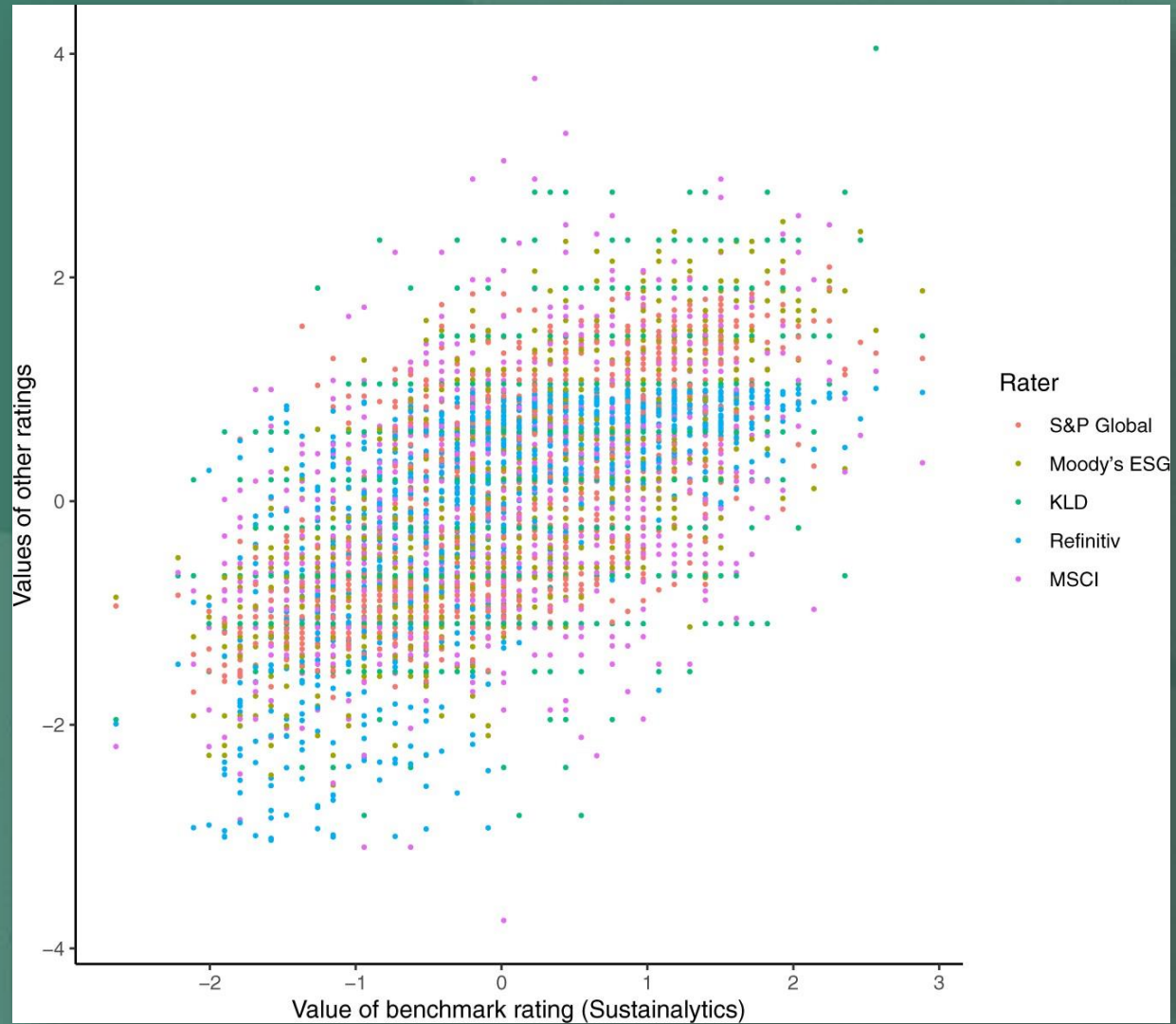


Third Party  
Rights



Green  
Washing

# ESG Rating Divergence



Source: Berg et al. (2022)

# Helping to pave the way towards broad and consistent disclosures by...



## ✓ Keeping track of voluntary disclosures

Many companies will still not be subject to regulatory disclosure requirements in the foreseeable future. Voluntary reporting with limited standardization might therefore continue to pose challenges that Gaia addresses.

## ✓ Improving availability and usability of historic data

Despite the shortcomings of today's climate-related reports many companies publish valuable information, some already over a long period of time. We aim to exploit this data to improve the tracing of past developments.

## ✓ Making climate-related reports more accessible

Corporate ESG reports often contain large amounts of information that go beyond what is required by disclosure standards or regulatory obligations. Gaia will help to make structured and unstructured data more accessible.

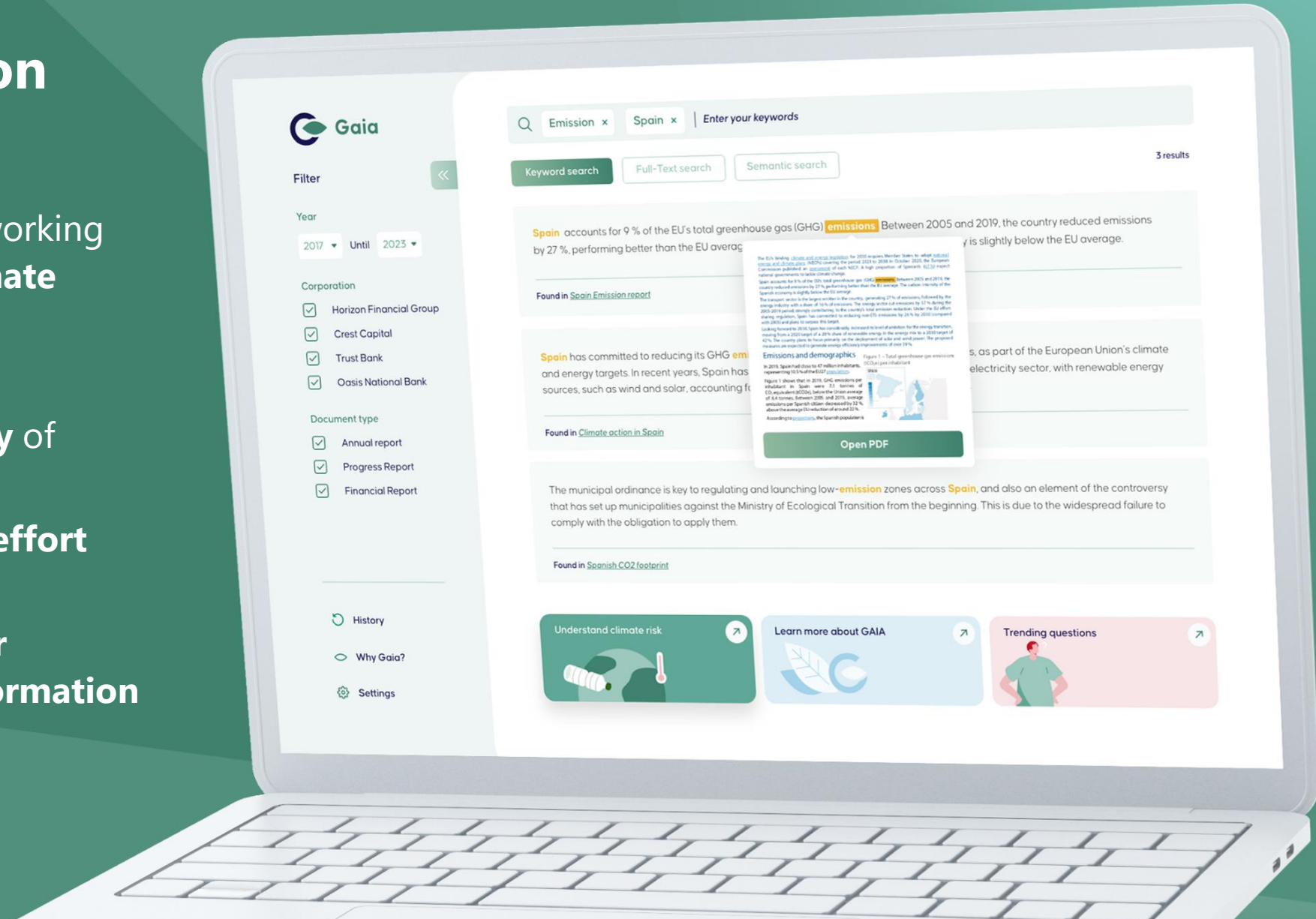
## ✓ Monitoring global adoption of standards

Gaia will enable analysts to monitor the global adoption of climate-related disclosures and help to understand how the reported information of companies evolves.

# Project Gaia Vision

One platform to facilitate working with publicly available climate related reports.

- increase the **usability** of climate-related data
- **reduce** the **manual effort** during research
- build a **reference** for climate-related information





Output



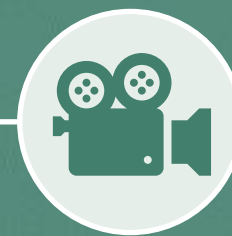
Data  
Repository



Semantic  
Search Engine



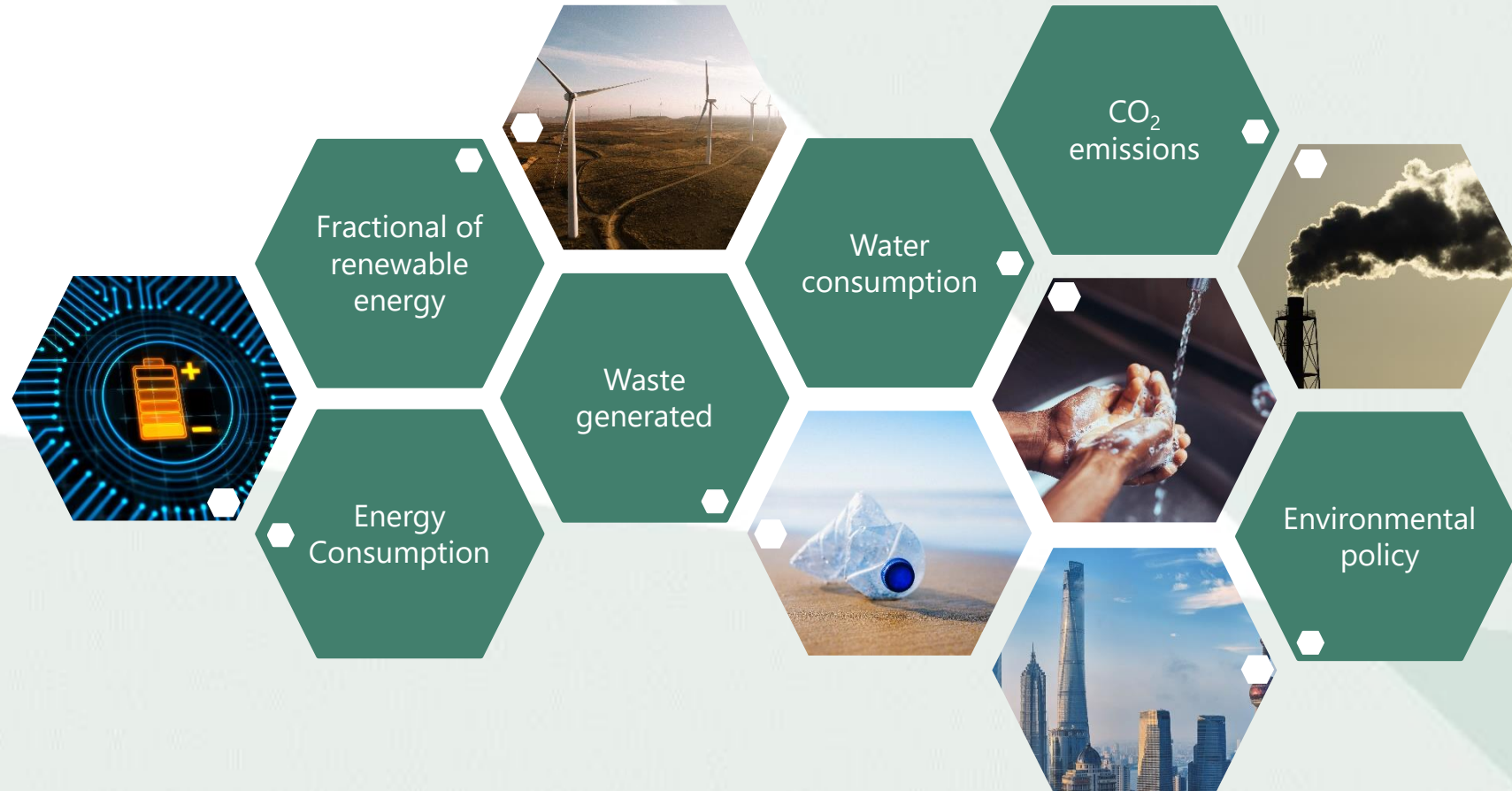
User Interface



Report &  
Video

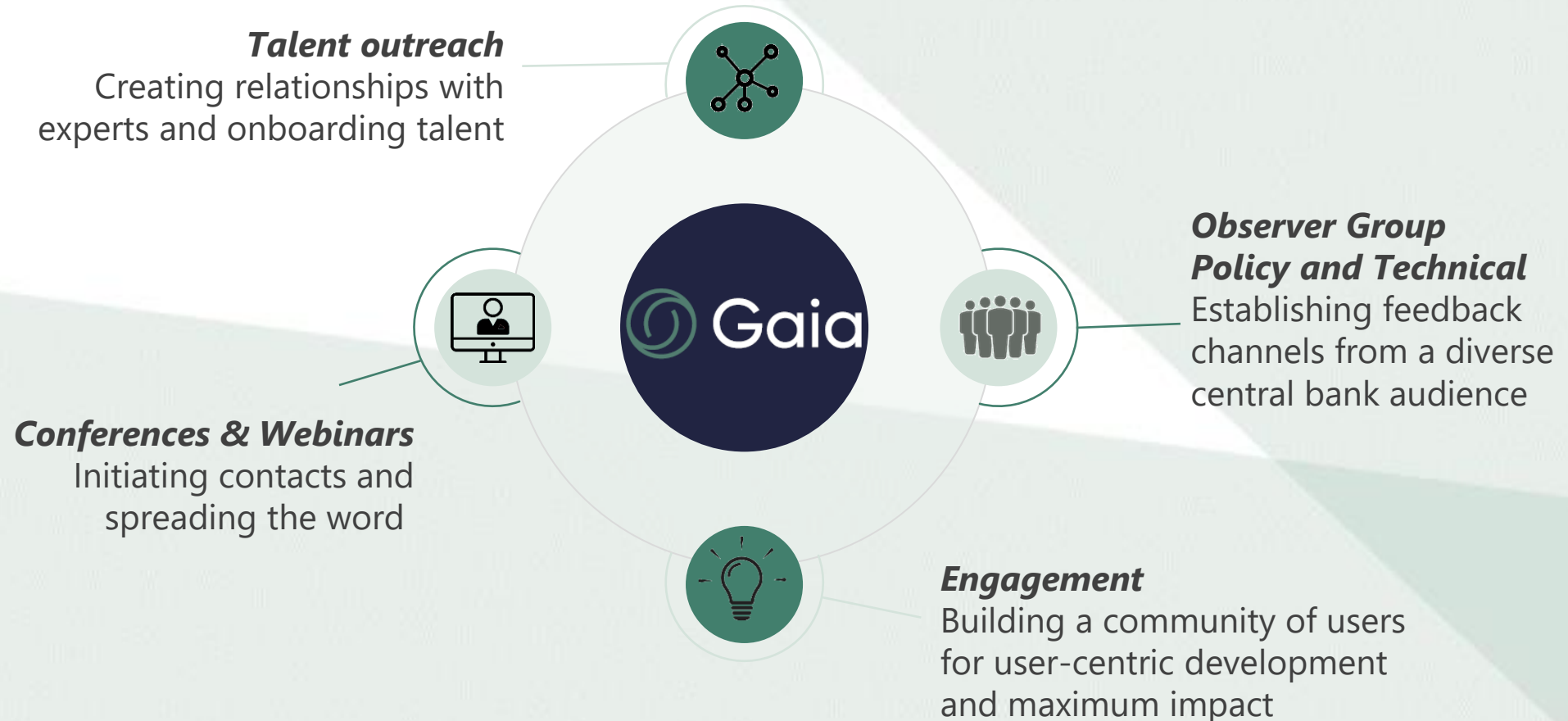


# Metrics and KPIs

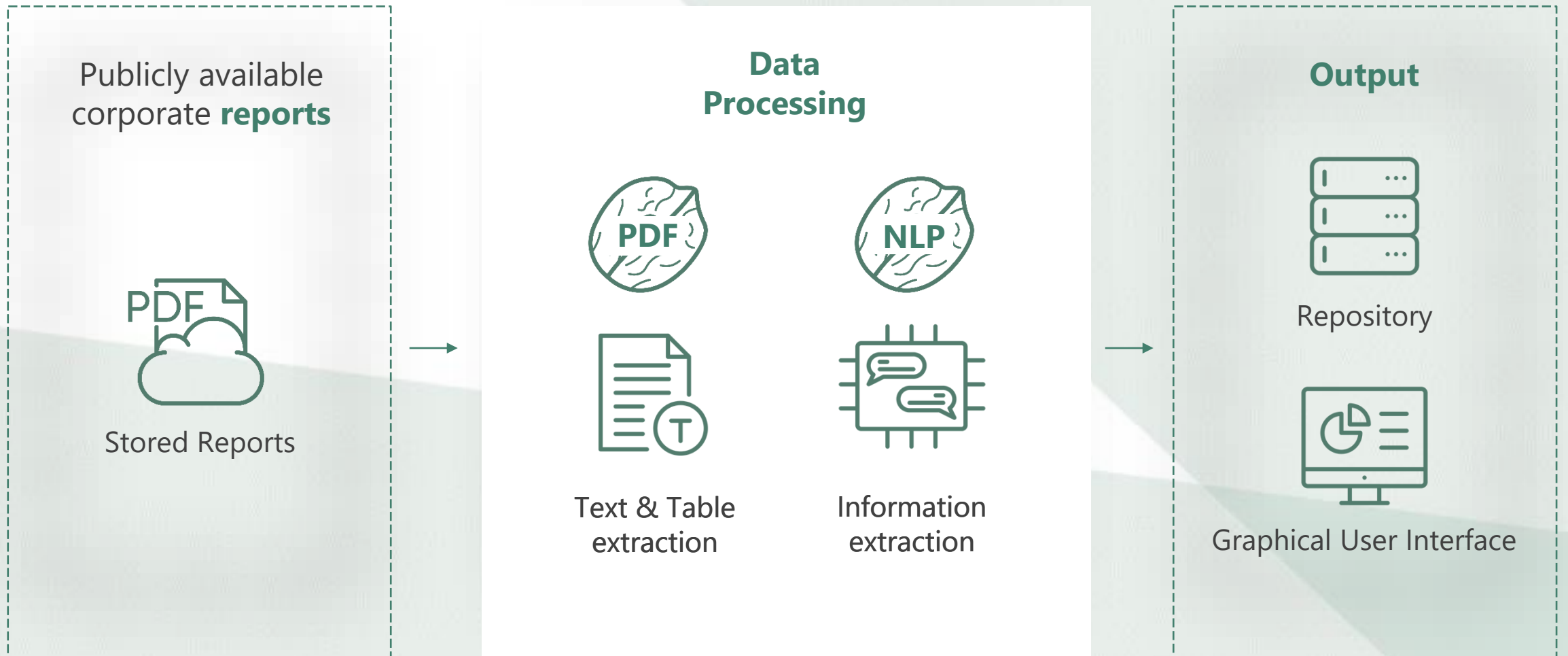


# Outreach strategy

Phased outreach to optimally **engage all stakeholders**



# A View into the **Engine Room**



# A solid foundation for **Innovation**

## Data Science

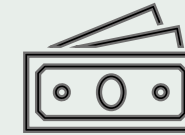
- experimentation heavy
- high uncertainty
- team competence



build



## External vendor



buy



## Data Engineering

- foundation of the project
- clear scope
- lack of skills in the team



## Many Ways to say the Same Thing

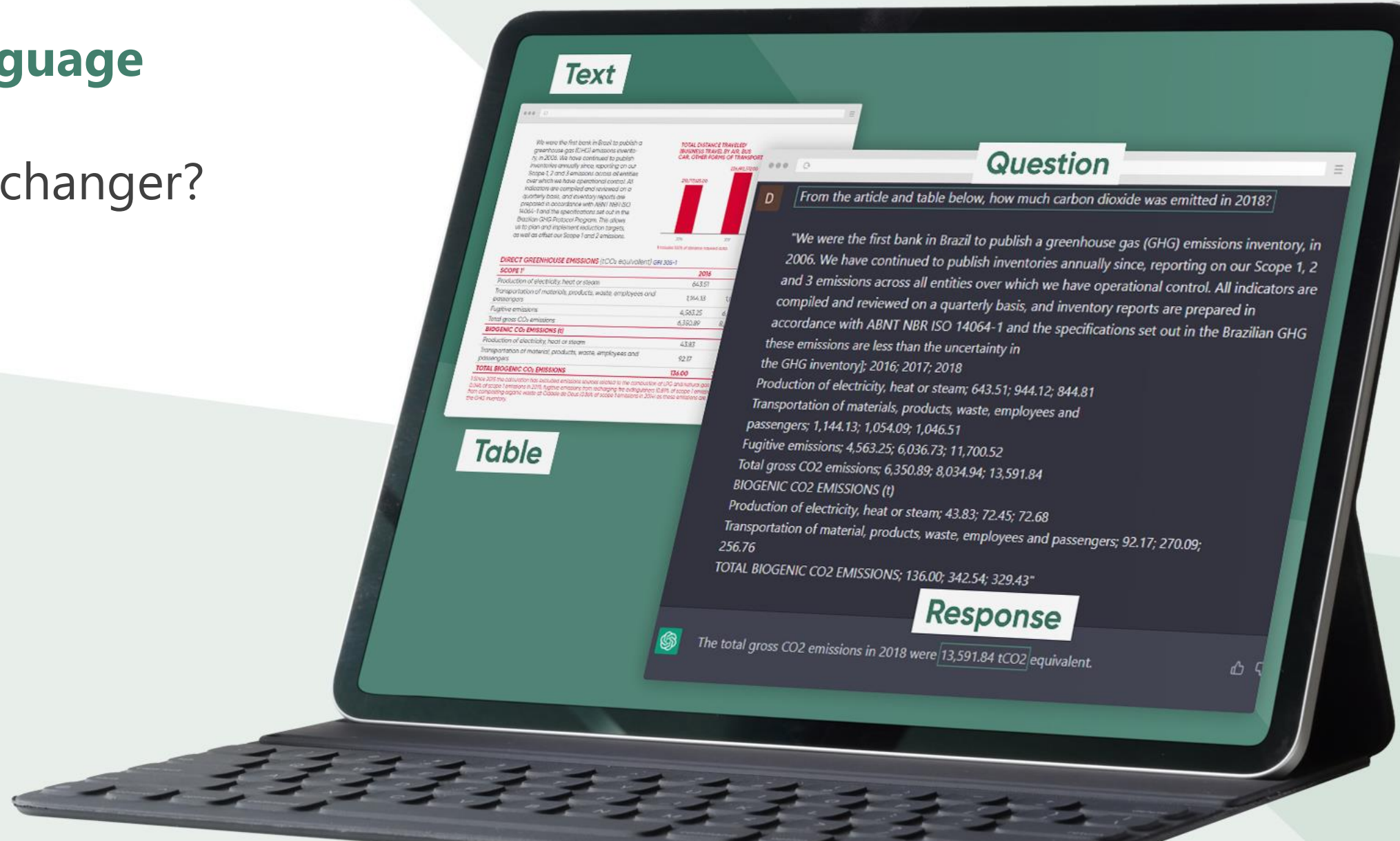
"In 2021, 96 percent of employees were included under the scope of the EMS"

"Merely 4 percent of employees were excluded from the EMS's purview in 2021"

"In 2021, the EMS encompassed nearly the entire workforce of 11400, with only 456"

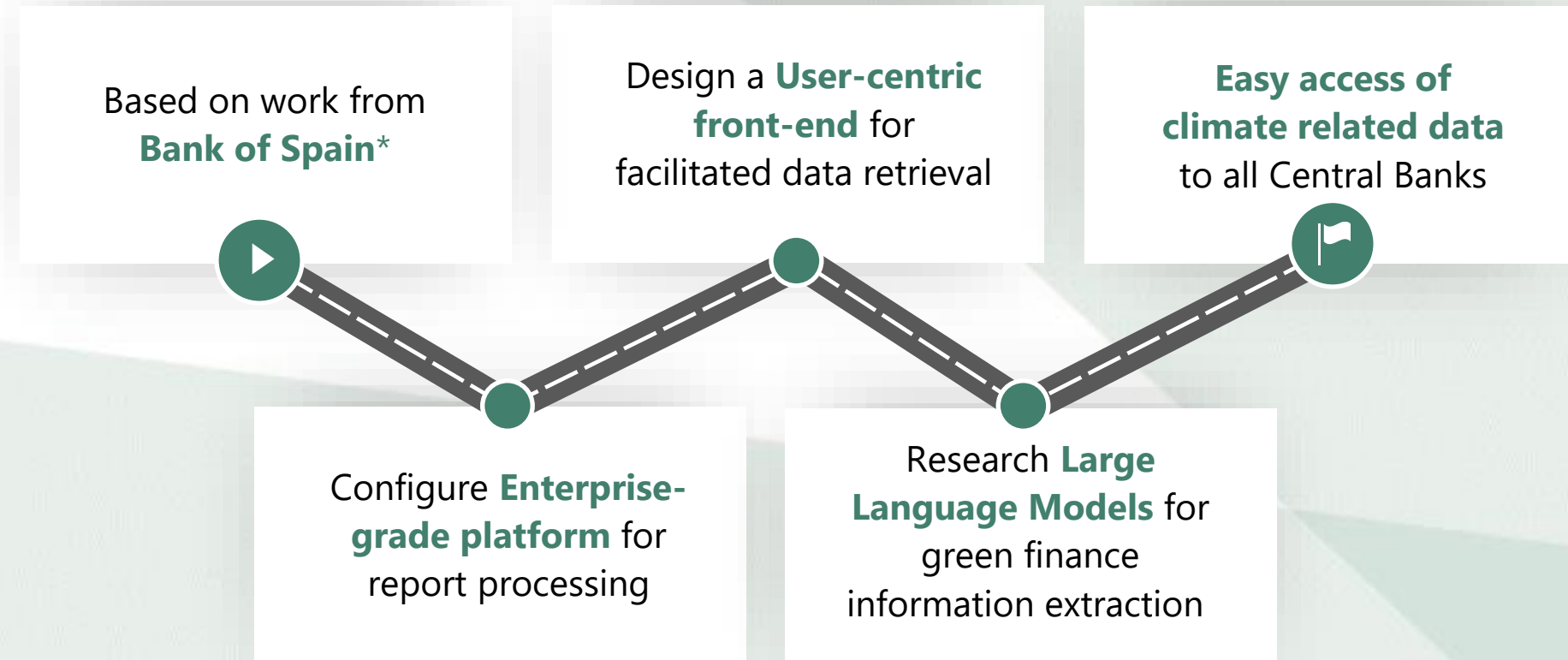
"The EMS-scope coverage in 2021 excluded 4 out of 100 employees"

# Large Language Models: The game changer?



# Project Gaia

## Roadmap to a Proof of Concept



\*" Analysis of ESG disclosures in Pillar 3 reports. A text mining approach" Ángel Iván Moreno Bernal y Teresa Caminero García (2022)

# Project Gaia – Enabling Climate Risks Analysis

## DEMO

Please reach out to:

✉ [Gaia@bisih.org](mailto:Gaia@bisih.org)

