

# PRESENT AND FUTURE XBRL FINANCIAL REPORTING AT BDE

INFORMATION SYSTEMS DEPARTMENT

June 2023



# CONTENT

1. Data Point Model Methodology: Banco de España experience
2. BdE: The Present
3. BdE: The Future
  - 3.1 DPM Refit: Taxonomy architecture (v2.0)
  - 3.2 CSV Format
  - 3.3 New VRs





*“Data Point Modelling is a **methodology** which intends to create a **bridge** between the functional design of a reporting framework – ‘the reporting templates’ – and the technical design of an **XBRL taxonomy**”.*

*“Data Point Models are formally **represented by XBRL taxonomy files** that are built following certain conventions to warrant an accurate and univocal representation of the data model.”*

[Link](#)

## Benefits of DPM

### Data “centric”

- DPM is template independent (data centric) -all information about data point is explicit (easy to communicate)

### Extensible

- NCA additional reporting requirements and validation rules: Adaptability and reusability features.

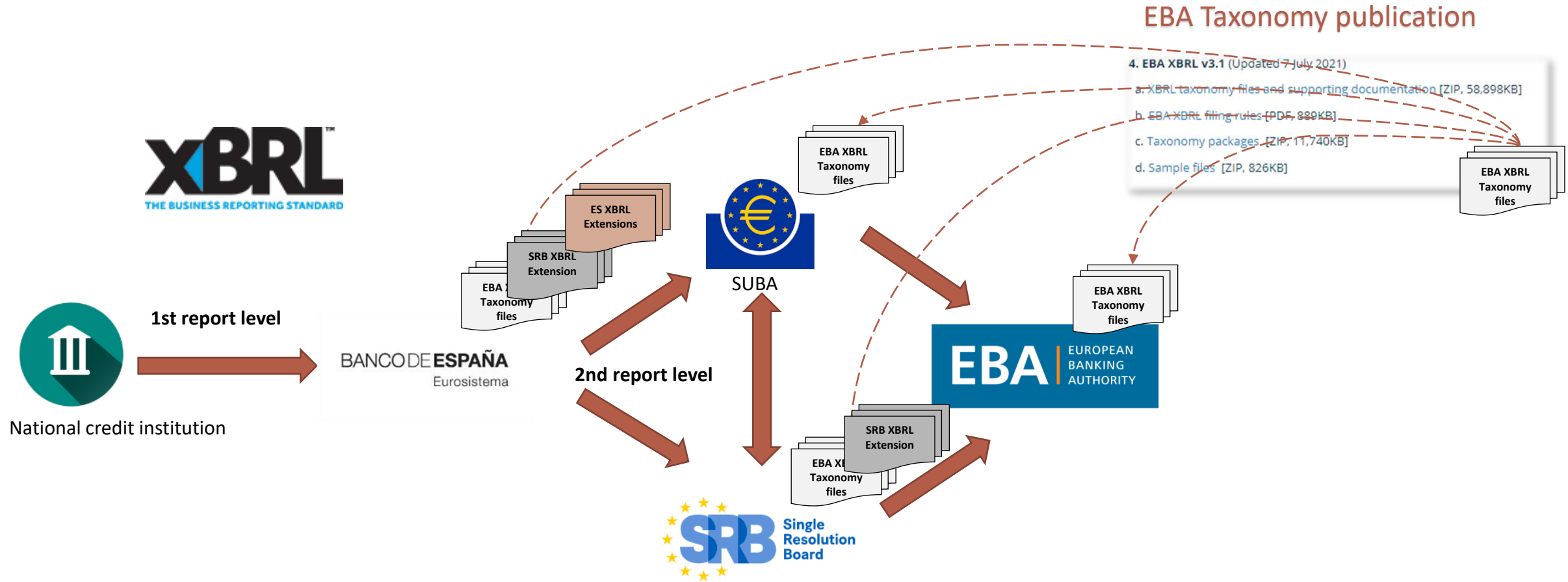
### Implemented with a technical standard: XBRL

- This standard guarantees QA thought the entire reporting chain as defined in the Sequential Approach

### Harmonized

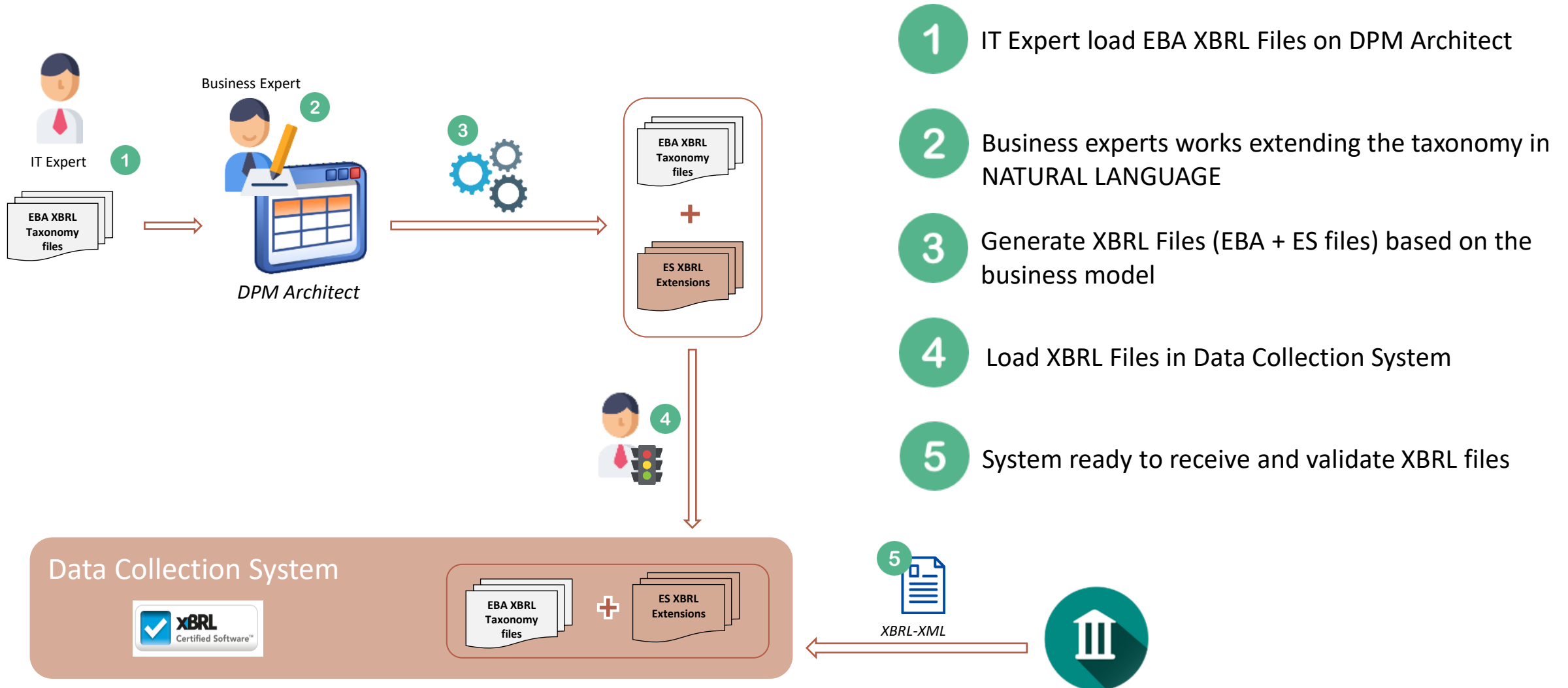
- DPM methodology aligned with the XBRL standard enables the same level of understanding of the data transmitted across the reporting chain.

## Benefits of DPM



# 1. DATA POINT MODEL METHODOLOGY: BANCO DE ESPAÑA EXPERIENCE

## Extension process in Banco de España

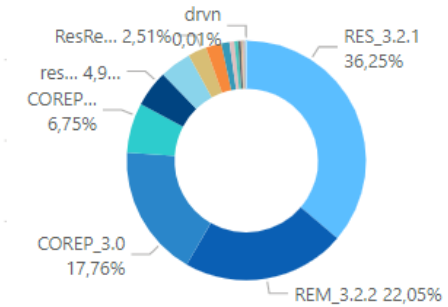
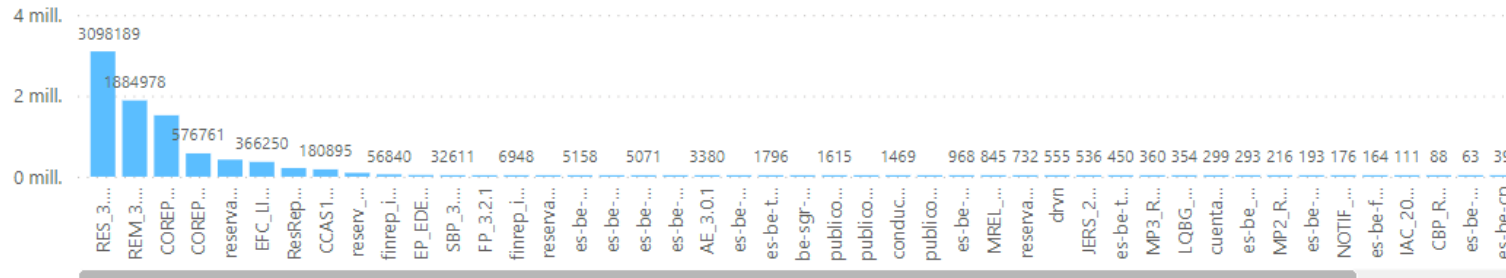


## 2. BDE: THE PRESENT

Some current figures (In effect taxonomies)

# Nº DATA POINTS 8.160.059

Taxonomías



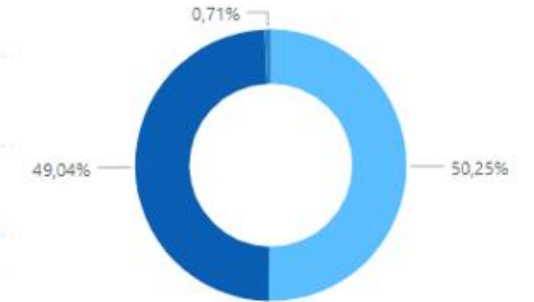
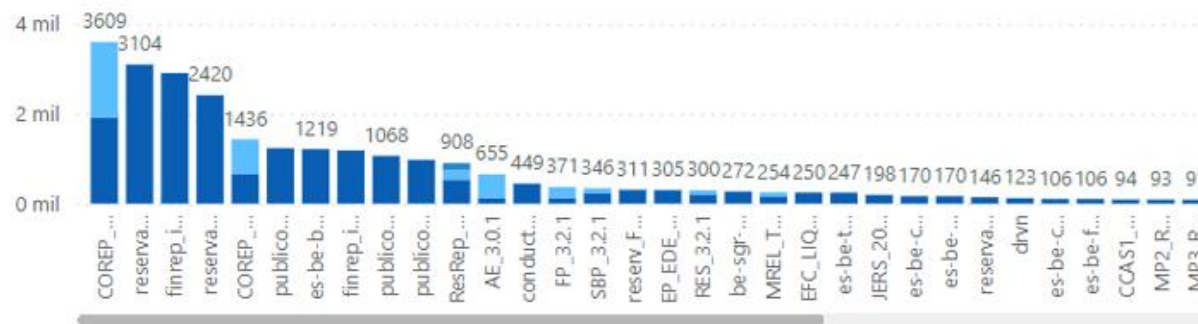
## VALIDATION RULES

# 86.301

Nº Cuadros

SEV.	bde	eba	srb	Total
ERROR	15069	30555	398	46022
INF. PRIVADA	1365			1365
INF. PÚBLICA	1641	6		1647
WARNING	24248	12801	218	37267
<b>Total</b>	<b>42323</b>	<b>43362</b>	<b>616</b>	<b>86301</b>

PROPIETARIO ● bde ● eba ● srb



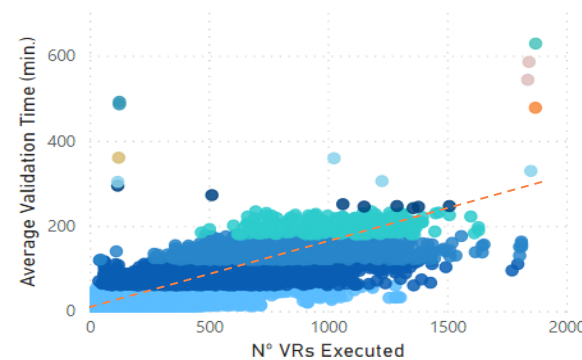
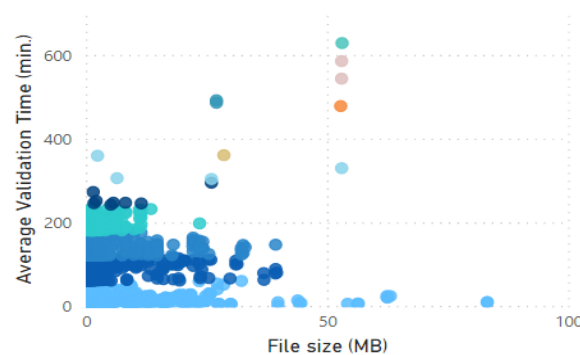
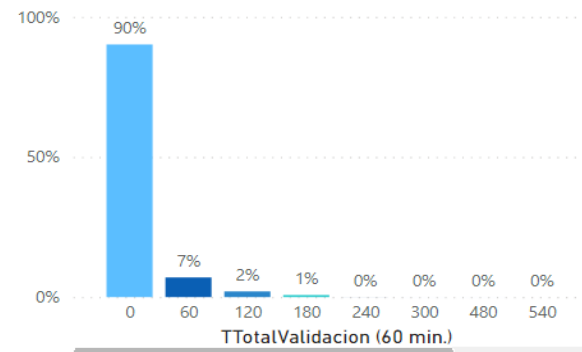
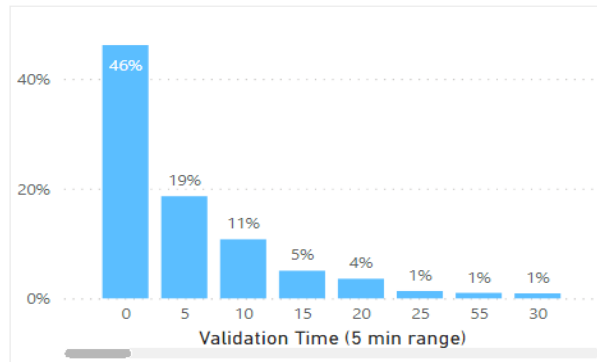
# How efficient were the validations of the XBRL instances?

THSA  N  S

**43.923** N° XBRL Instances

**18,59** Average validation time (min.)

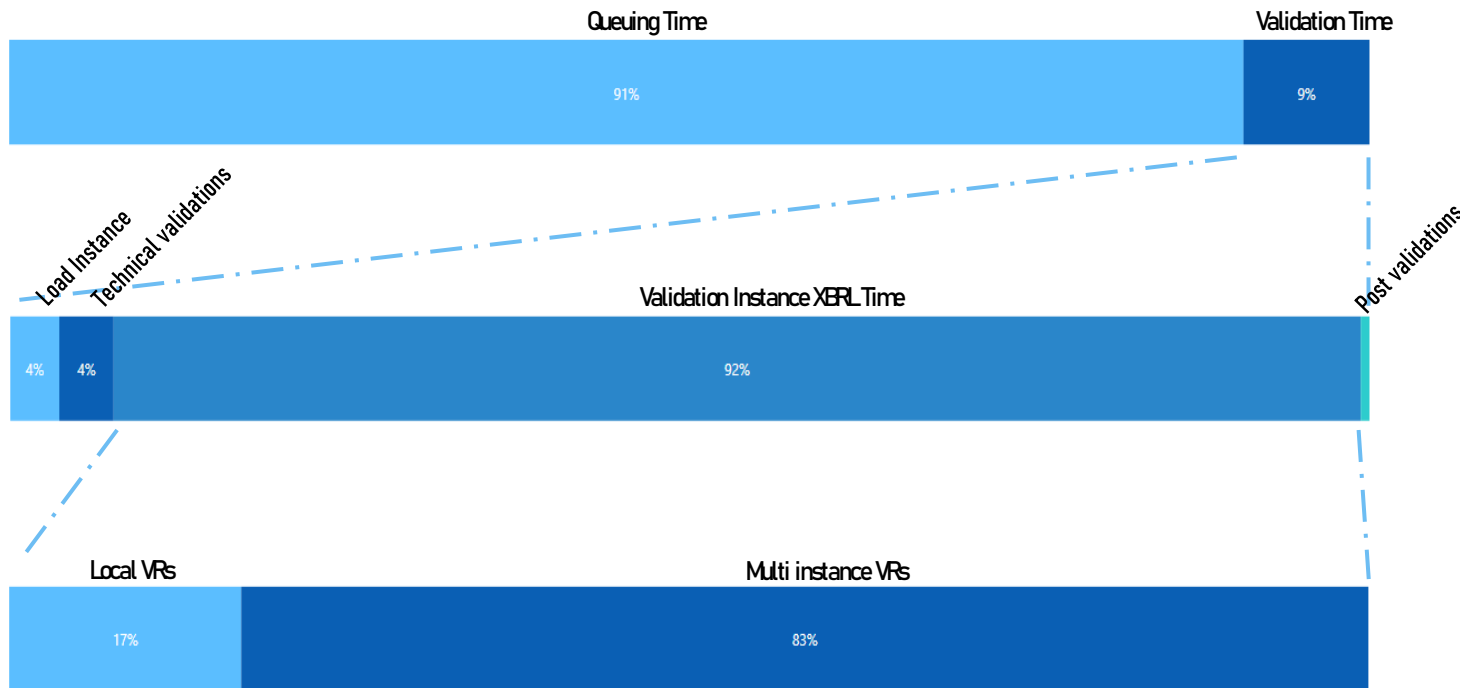
**0,63** Average file size (MB) A



- 90% less than 1 hour
- 46% less than 1 minute
- Number and type of VRs seems determinate the execution time
  - Not size

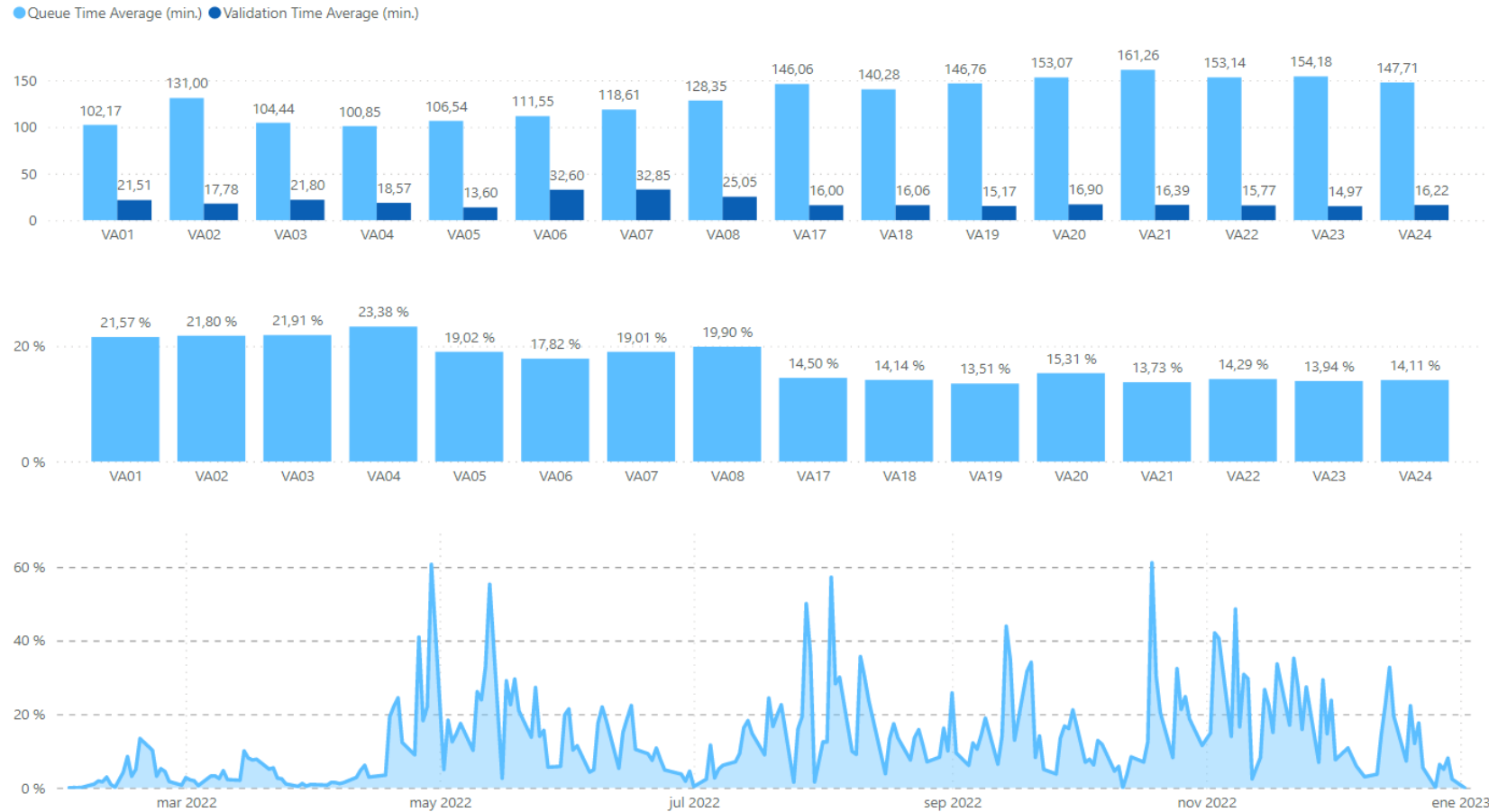


# How long on average it takes for a declaration to be validated from the time it is received?



- Only 9% of the total is referred to the validation of the declaration.
- Of that 9%, more than 80% are multi-instance validation rules
  - These have dependencies with other modules, can cause reprocessing, etc...

# How busy were our queues? 16 queues



- Although the average queue occupancy does not exceed 24% on average, the non-linear nature of the receipt of instances causes the waiting time per queue to be high.

- The validation times obtained by our XBRL engine are **good enough for our requirements**.
- Although the increase in file size may have an impact on file transmission, we do **not consider it a critical problem at present**.
- Improved **queue management** for receiving XBRL instances has room for improvement
  - **Dynamic queues** that are created and destroyed on demand.
  - **Intelligent routing** of XBRL instances to cause as few interdependencies as possible.



#### Relevant changes that impact us

##### EBA Taxonomy Architecture 2.0

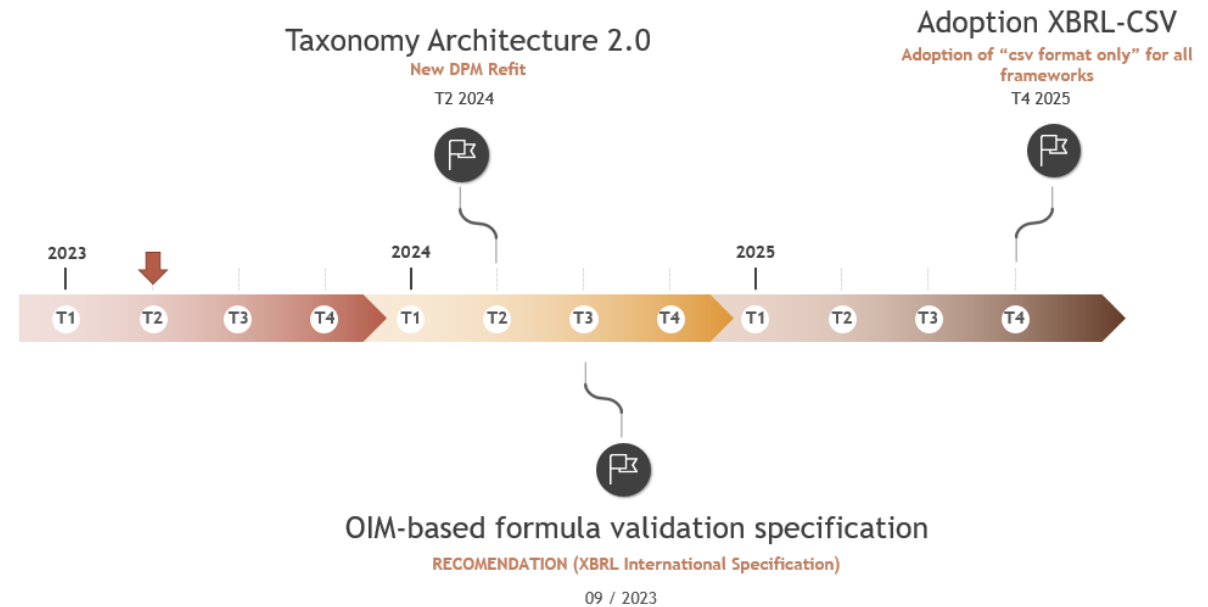
- Versioning of dictionary elements and new compound type
- The concept "taxonomy" disappears
- VRs are divided by evaluations
- Disappearance of the affected table concept

##### CSV format

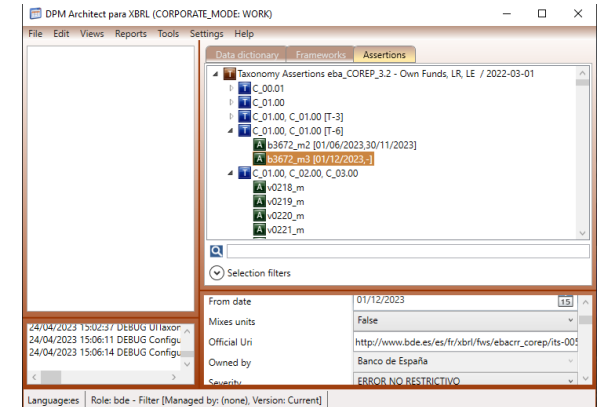
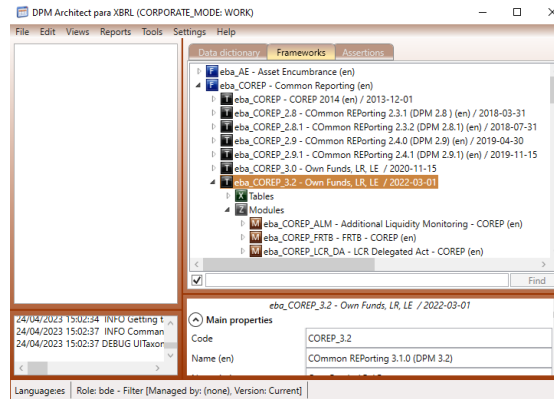
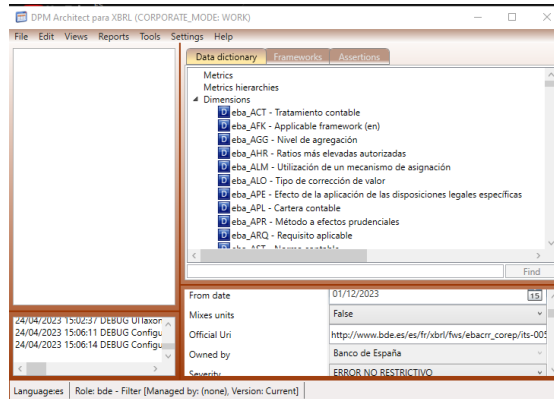
- EBA will **ONLY** accept csv format from the 2025 reference date

##### New VRs Language

- According to EBA new CVE Processor
- New formula Specification (?)

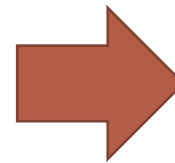


# The future of DPM Architect as a public free tool for Data Point Modelling



EBA Architecture 2.0 has a big impact in its design, specially:

- The concept "taxonomy" disappears
- VRs are divided by evaluations
- Disappearance of the affected table concept



**We cannot guarantee a public version of DPM that supports the new architecture.**

**...at least, for the time being.**

## Impact of implementing the new CSV format

- More than **300 national entities** reported us in XBRL in 2022, but we expect **more than 700** for this year
- We **must keep both formats** at least, for resubmissions
- Our time validation have **enough performance for our requirements** with XBRL-XML format.
- For now, CSV format offers lighter files, but a **better performance in the execution of validation rules cannot be assured**.
- The new formula specification (XBRL International) **does not cover all types of VRs (XPath)**.

### REMARK

Although we think CSV format is the future and open new possibilities for reception of granular data with a much better performance, we also think the stop supporting current XML format is an error.



THANK YOU FOR YOUR ATTENTION

